

ASL SERIES Single-Acting, Single or Double Piston Air Drive

- Single-Acting, Single and Double Piston Air Drive
- Service: Oil, Water, Water/Oil mixture and other fluids depending on material compatibility
- Maximum Operating Temperature: 0-140° F (-18° to 60° C)
- Pressure Head: 316 Stainless Steel
- Check Valve Glands: 316 Stainless Steel
- Liquid Seal: see Ordering Guide for options
- Air Drive Seals: Buna N



Reference Guide

Pump Model Series	Pressure Ratio	Maximum Rated Outlet Pressure PSI (bar)	Displacement Per Cycle .in ³ (cm ³)	Liquid Connections	
				Inlet	Outlet
ASL Series					
ASL10-01	1:11	1,600 (110)	5.22 (85.5)	1" FNPT	1/2" FNPT
ASL15-01	1:16	2,300 (159)	3.62 (59.3)	1" FNPT	1/2" FNPT
ASL25-01	1:28	4,000 (276)	2.10 (34.4)	1/2" FNPT	1/2" FNPT
ASL35-01	1:39	5,600 (386)	1.50 (24.64)	1/2" FNPT	1/2" FNPT
ASL60-01	1:70	10,000 (689)	0.84 (13.8)	1/2" FNPT	1/2" FNPT
ASL100-01	1:113	15,000 (1,034)	0.52 (8.5)	1/2" FNPT	1/2" FNPT
ASL150-01	1:150	21,500 (1,482)	0.39 (6.4)	1/2" FNPT	F250C
ASL250-01	1:265	38,400 (2,648)	0.22 (3.6)	1/2" FNPT	F250C
ASL400-01	1:398	57,700 (3,978)	0.14 (2.3)	1/2" FNPT	F250C
ASL10-02	1:22	3,200 (221)	5.22 (85.5)	1" FNPT	1/2" FNPT
ASL15-02	1:32	4,600 (317)	3.62 (59.3)	1" FNPT	1/2" FNPT
ASL25-02	1:56	8,100 (558)	2.10 (34.4)	1/2" FNPT	1/2" FNPT
ASL35-02	1:78	11,200 (772)	1.50 (24.64)	1/2" FNPT	1/2" FNPT
ASL60-02	1:140	20,000 (1,379)	0.84 (13.8)	1/2" FNPT	9/16" SF562CX
ASL100-02	1:226	31,000 (2,137)	0.52 (8.5)	1/2" FNPT	F250C
ASL150-02	1:300	43,000 (2,965)	0.39 (6.4)	1/2" FNPT	F250C
ASL250-02	1:530	60,000 (4,137)	0.22 (3.6)	1/2" FNPT	F250C
ASL400-02	1:796	60,000 (4,137)	0.14 (2.3)	1/2" FNPT	F250C

Ordering Guide

Typical catalog number example: **ASL250-01SNP** (catalog number is created based on customer selection of product parameters, see below for example)

ASL250-01	S	N	P
Pump Series Type/Size/Ratio	Liquid Inlet Location	Isolation Chamber	Liquid Seal Material
ASL <ul style="list-style-type: none"> Standard Liquid High Pressure Pump 6" Single Piston Air Drive 1:265 Max. Air-to-Liquid Pressure Ratio Maximum 38,400 psi (2,648 bar) 	S* = Side B = Bottom	N* = None C = Included	P* = UHMWPE U-Cup (See table below)

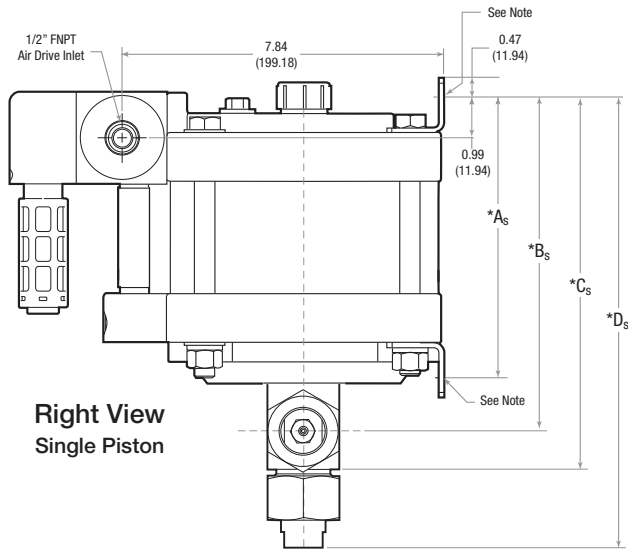
* Standard for stock pumps

Available seal material for the following models.

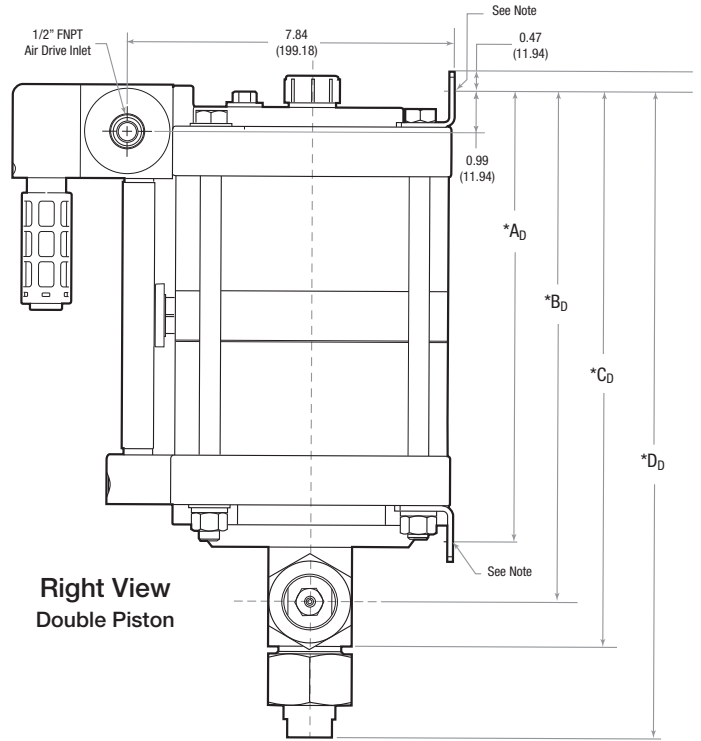
Model Number	Seal Material
ASL10 ASL15	*PV = UHMWPE U-Cup and Viton O-Rings PE = UHMWPE U-Cup and EPDM O-Rings PB = UHMWPE U-Cup and Buna-N O-Rings PC = UHMWPE U-Cup and Perfluoroelastomer O-Rings UV = Urethane U-Cup and Viton O-Rings UE = Urethane U-Cup and EPDM O-Rings UB = Urethane U-Cup and Buna-N O-Rings TV = Thermoplastic Polyester U-Cup and Viton O-Rings TE = Thermoplastic Polyester U-Cup and EPDM O-Rings TB = Thermoplastic Polyester U-Cup and Buna-N O-Rings TC = Thermoplastic Polyester U-Cup and Perfluoroelastomer O-Rings
ASL25 ASL35	*PV = UHMWPE U-Cup and Viton O-Rings PE = UHMWPE U-Cup and EPDM O-Rings PB = UHMWPE U-Cup and Buna-N O-Rings PC = UHMWPE U-Cup and Perfluoroelastomer O-Rings UV = Urethane U-Cup and Viton O-Rings UE = Urethane U-Cup and EPDM O-Rings UB = Urethane U-Cup and Buna-N O-Rings
ASL60	*P = UHMWPE U-Cup with Elgiloy Spring O-Rings UV = Urethane U-Cup and Viton O-Rings UE = Urethane U-Cup and EPDM O-Rings UB = Urethane U-Cup and Buna-N O-Rings
ASL100 ASL150 ASL250 ASL400	*P = UHMWPE U-Cup UE = Urethane U-Cup

* Standard for stock pumps

Air Drive Connection - All ASL series pumps have a 1/2" FNPT main air drive supply connection and utilize a 1/8" FNPT pilot port connection for remote start/stop operation. It is recommended to operate the pilot port at a higher air pressure than the main air drive supply pressure for proper function.

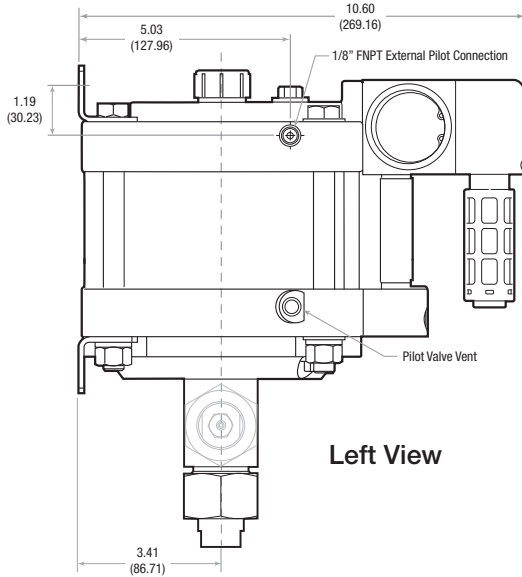


**Right View
Single Piston**

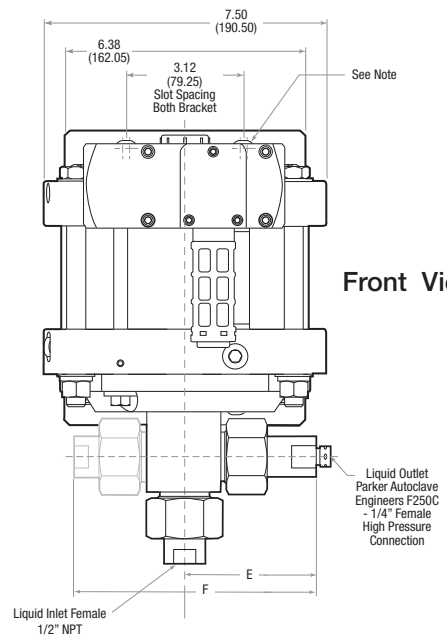


**Right View
Double Piston**

*See following page for product dimensions.



Left View



Front View

Note:

Each mounting bracket includes (2) x 11/32" (8.73) slots for 5/16" bolts.
Bottom inlet pump head and side inlet pump head are mutually exclusive.
All dimensions are for reference only and are subject to change without notice.

Primary dimensions: Inches
Secondary Dimensions: (Millimeters)

ASL Series: Dimensions

Pump Model Series	A _S	B _S	C _S	D _S	E _S	F _S	G _S
Single Piston Air Drive							
ASL10-01	6.87 (175)	8.25 (210)	9.83 (250)	12.51 (318)	3.27 (83)	7.57 (192)	3.95 (100)
ASL15-01	6.87 (175)	8.25 (210)	9.83 (250)	12.51 (318)	3.27 (83)	7.57 (192)	3.95 (100)
ASL25-01	6.87 (175)	8.25 (210)	9.83 (250)	11.54 (293)	3.27 (83)	6.92 (176)	3.95 (100)
ASL35-01	6.87 (175)	8.25 (210)	9.83 (250)	11.54 (293)	3.27 (83)	6.92 (176)	3.95 (100)
ASL60-01	6.87 (175)	8.31 (211)	9.25 (235)	12.10 (307)	3.43 (87)	7.24 (184)	3.95 (100)
ASL100-01	6.87 (175)	8.31 (211)	9.25 (235)	12.10 (307)	3.43 (87)	7.24 (184)	3.95 (100)
ASL150-01	6.87 (175)	8.31 (211)	9.25 (235)	11.55 (293)	4.18 (106)	7.45 (189)	3.95 (100)
ASL250-01	6.87 (175)	8.31 (211)	9.25 (235)	11.55 (293)	4.18 (106)	7.45 (189)	3.95 (100)
ASL400-01	6.87 (175)	8.37 (213)	9.39 (239)	11.74 (298)	2.75 (70)	6.13 (156)	3.95 (100)
Double Piston Air Drive							
Pump Model Series	A _D	B _D	C _D	D _D	E _D	F _D	G _D
Double Piston Air Drive							
ASL10-02	10.81 (275)	12.19 (310)	13.77 (350)	16.45 (418)	3.27 (83)	7.57 (192)	3.95 (100)
ASL15-02	10.81 (275)	12.19 (310)	13.77 (350)	16.45 (418)	3.27 (83)	7.57 (192)	3.95 (100)
ASL25-02	10.81 (275)	12.19 (310)	13.77 (350)	15.48 (393)	3.27 (83)	6.92 (176)	3.95 (100)
ASL35-02	10.81 (275)	12.19 (310)	13.77 (350)	15.48 (393)	3.27 (83)	6.92 (176)	3.95 (100)
ASL60-02	10.81 (275)	12.25 (311)	13.19 (335)	16.04 (407)	3.43 (87)	7.24 (184)	3.95 (100)
ASL100-02	10.81 (275)	12.25 (311)	13.19 (335)	15.50 (394)	4.18 (106)	7.24 (184)	3.95 (100)
ASL150-02	10.81 (275)	12.25 (311)	13.19 (335)	15.50 (394)	4.18 (106)	7.45 (189)	3.95 (100)
ASL250-02	10.81 (275)	12.30 (312)	13.32 (338)	15.68 (398)	2.75 (70)	7.45 (189)	3.95 (100)
ASL400-02	10.81 (275)	12.30 (312)	13.32 (338)	15.68 (398)	2.75 (70)	6.13 (156)	3.95 (100)

Note:

Each mounting bracket includes two (2) x 13/32" (10.32) slots for 3/8" bolts. Bottom inlet pump head and side inlet pump head are mutually exclusive. All dimensions are for reference only and are subject to change without notice.

Primary Dimensions: Inches
Secondary Dimensions: (Millimeters)

Flow Rate Table: Air Drive Pressure (psi) vs. Outlet Pressure (psi)

Catalog Number	Air Drive Pressure (psi)	Outlet Pressure (psi)													
		0	500	1,500	3,000	5,000	7,500	10,000	15,000	25,000	40,000	55,000			
ASL10-01	60	1277	489												
	90	305	826												
	120	1360	925												
ASL15-01	60	887	485												
	90	906	591												
	120	945	642	474											
ASL25-01	60	508	342	127											
	90	520	387	303											
	120	543	427	360	202										
ASL35-01	60	315	273	121											
	90	322	291	211	58										
	120	328	302	250	157										
ASL60-01	60	168	155	125	79										
	90	175	161	134	106	63									
	120	182	167	140	118	94	45								
ASL100-01	60	104	99	88	70	46									
	90	108	103	92	78	65	44	11							
	120	112	106	95	83	72	60	47							
ASL150-01	60	81	79	76	66	49	19								
	90	83	82	80	75	67	53	35							
	120	84	83	82	78	73	66	55	25						
ASL250-01	60	46	45	44	42	37	26	20	2						
	90	47	46	45	44	43	40	36	26						
	120	48	47	47	46	45	43	41	34	17					
ASL400-01	60	39	38	37	36	33	29	23	10						
	90	40	39	38	38	37	35	32	26	8					
	120	41	40	39	38	38	37	36	32	21					
ASL10-02	60	880	720												
	90	890	800	350											
	120	900	840	570											
ASL15-02	60	615	550	200											
	90	625	575	410											
	120	630	600	500	225										
ASL25-02	60	345	330	265	60										
	90	350	335	300	208	15									
	120	355	345	320	265	150									
ASL35-02	60	240	230	210	115										
	90	242	232	225	190	115									
	120	245	235	230	210	170	95								

in³ /min.

Catalog Number	Air Drive Pressure (psi)	Outlet Pressure (psi)											in ³ /min.
		0	500	1,500	3,000	5,000	7,500	10,000	15,000	25,000	40,000	55,000	
ASL60-02	60	150	148	145	120	70	2						
	90	155	152	147	136	117	80	33					
	120	157	154	152	145	133	112	82	8				
ASL100-02	60	86	84	82	77	72	53	30					
	90	87	86	84	82	82	70	61	36				
	120	89	88	86	84	84	77	72	57	13			
ASL150-02	60	64	64	63	60	57	50	38	14				
	90	65	65	64	62	60	57	53	41	9			
	120	66	66	65	64	63	61	58	51	32			
ASL250-02	60	37	36	36	35	35	34	32	27	12			
	90	37	36	36	36	36	36	34	31	25	10		
	120	37	37	36	36	36	36	35	34	30	21	9	
ASL400-02	60	31	31	30	30	29	29	28	26	16			
	90	31	31	31	30	30	30	29	27	23	14	2	
	120	31	31	31	31	30	30	30	29	27	21	14	