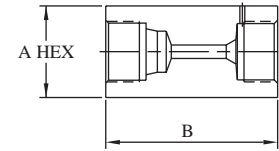


MALE-FEMALE ADAPTERS

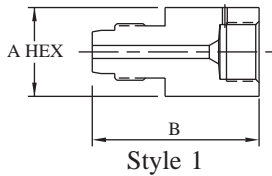
Low Pressure Female x High Pressure Female

Catalog Number	Female L/P	Female H/P	A		B		Port	
LPC2L4H	1/8"	1/4"	0.75"	(19.1)	1.50"	(38.1)	0.093"	(2.4)
LPC2L6H	1/8"	3/8"	1.00"	(25.4)	2.00"	(50.8)	0.093"	(2.4)
LPC2L9H	1/8"	9/16"	1.38"	(35.1)	2.25"	(57.2)	0.093"	(2.4)
LPC4L4H	1/4"	1/4"	0.75"	(19.1)	1.50"	(38.1)	0.093"	(2.4)
LPC4L6H	1/4"	3/8"	1.00"	(25.4)	1.75"	(44.5)	0.125"	(3.2)
LPC4L9H	1/4"	9/16"	1.38"	(35.1)	2.25"	(57.2)	0.187"	(4.7)
LPC6L4H	3/8"	1/4"	0.75"	(19.1)	1.50"	(38.1)	0.093"	(2.4)
LPC6L6H	3/8"	3/8"	1.00"	(25.4)	1.75"	(44.5)	0.125"	(3.2)
LPC6L9H	3/8"	9/16"	1.38"	(35.1)	2.25"	(57.2)	0.187"	(4.7)
LPC8L4H	1/2"	1/4"	1.00"	(25.4)	1.62"	(41.1)	0.093"	(2.4)
LPC8L6H	1/2"	3/8"	1.38"	(35.1)	2.00"	(50.8)	0.125"	(3.2)
LPC8L9H	1/2"	9/16"	1.38"	(35.1)	2.25"	(57.2)	0.187"	(4.7)

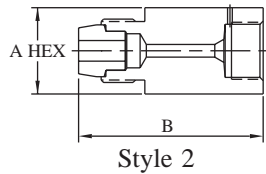


Low Pressure Male x High Pressure Female

Catalog Number	Male L/P	Female H/P	A		B		Port		Style
LPA2L4H	1/8"	1/4"	0.75"	(19.1)	1.50"	(38.1)	0.093"	(2.4)	1
LPA2L6H	1/8"	3/8"	1.00"	(25.4)	1.83"	(46.5)	0.093"	(2.4)	1
LPA2L9H	1/8"	9/16"	1.38"	(35.1)	1.87"	(47.5)	0.093"	(2.4)	1
LPA4L4H	1/4"	1/4"	0.75"	(19.1)	1.77"	(45.0)	0.093"	(2.4)	2
LPA4L6H	1/4"	3/8"	1.00"	(25.4)	1.75"	(44.5)	0.093"	(2.4)	2
LPA4L9H	1/4"	9/16"	1.38"	(35.1)	2.46"	(62.5)	0.187"	(4.7)	2
LPA6L4H	3/8"	1/4"	0.75"	(19.1)	1.65"	(41.9)	0.125"	(3.2)	2
LPA6L6H	3/8"	3/8"	1.00"	(25.4)	2.08"	(52.8)	0.125"	(3.2)	2
LPA6L9H	3/8"	9/16"	1.38"	(35.1)	2.09"	(53.1)	0.187"	(4.7)	2
LPA8L4H	1/2"	1/4"	1.38"	(35.1)	2.09"	(53.1)	0.093"	(2.4)	2
LPA8L6H	1/2"	3/8"	1.38"	(35.1)	2.09"	(53.1)	0.125"	(3.2)	2
LPA8L9H	1/2"	9/16"	1.38"	(35.1)	2.09"	(53.1)	0.250"	(6.4)	2



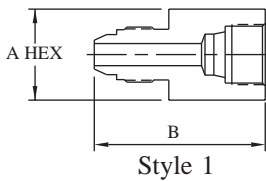
Style 1



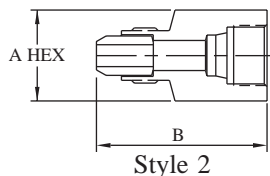
Style 2

High Pressure Male x Low Pressure Female

Catalog Number	Male H/P	Female L/P	A		B		Port		Style
LPA4H2L	1/4"	1/8"	0.63"	(16.0)	1.43"	(36.3)	0.125"	(3.2)	2
LPA4H4L	1/4"	1/4"	0.75"	(19.1)	1.68"	(42.7)	0.082"	(2.1)	1
LPA4H6L	1/4"	3/8"	0.75"	(19.1)	1.68"	(42.7)	0.125"	(3.2)	2
LPA4H8L	1/4"	1/2"	0.75"	(19.1)	1.68"	(42.7)	0.125"	(3.2)	1
LPA6H2L	3/8"	1/8"	0.75"	(19.1)	1.62"	(41.1)	0.093"	(2.4)	1
LPA6H4L	3/8"	1/4"	0.75"	(19.1)	1.74"	(44.2)	0.125"	(3.2)	1
LPA6H6L	3/8"	3/8"	0.75"	(19.1)	2.00"	(50.8)	0.125"	(3.2)	1
LPA6H8L	3/8"	1/2"	0.75"	(19.1)	2.00"	(50.8)	0.218"	(5.5)	2
LPA9H2L	9/16"	1/8"	1.18"	(30.0)	2.06"	(52.3)	0.093"	(2.4)	2
LPA9H4L	9/16"	1/4"	1.18"	(30.0)	2.05"	(52.1)	0.187"	(4.7)	2
LPA9H6L	9/16"	3/8"	1.18"	(30.0)	2.06"	(52.3)	0.281"	(7.1)	2
LPA9H8L	9/16"	1/2"	1.13"	(28.7)	1.62"	(41.1)	0.281"	(7.1)	2



Style 1

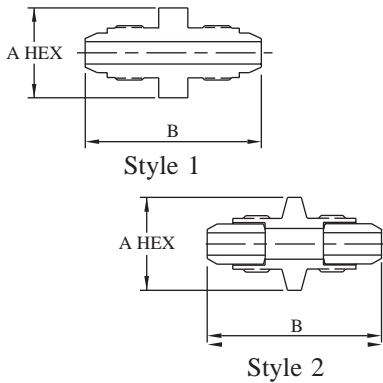


Style 2

NOTE: See page ACC-1 to determine maximum allowable working pressure (MAWP)

All dimensions are for reference only and are subject to change.
Dimensions in parentheses are millimeters (mm).

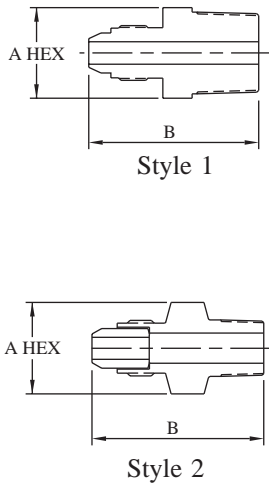
MALE-FEMALE ADAPTERS



High Pressure Male x High Pressure Male

Catalog Number	Male H/P	Male H/P	A	B	Port	Style
MA4H4H	1/4"	1/4"	0.75" (19.1)	2.12" (53.8)	0.125" (3.2)	2
MA6H4H	3/8"	1/4"	0.75" (19.1)	2.42" (61.5)	0.082" (2.1)	1
MA6H6H	3/8"	3/8"	0.75" (19.1)	2.50" (63.5)	0.218" (5.5)	2
MA9H4H	9/16"	1/4"	1.13" (28.7)	2.99" (75.9)	0.125" (3.2)	2
MA9H6H	9/16"	3/8"	1.18" (30.0)	3.06" (77.7)	0.218" (5.5)	2
MA9H9H	9/16"	9/16"	1.18" (30.0)	3.37" (85.6)	0.218" (5.5)	2

High Pressure Male x NPT Male



Catalog Number	Male H/P	Male NPT	A	B	Port	Style
MA4H2P	1/4"	1/8"	1.00" (25.4)	2.18" (55.4)	0.125" (3.2)	1
MA4H4P	1/4"	1/4"	1.00" (25.4)	2.18" (55.4)	0.125" (3.2)	2
MA4H6P	1/4"	3/8"	0.75" (19.1)	1.86" (47.2)	0.125" (3.2)	2
MA4H8P	1/4"	1/2"	1.00" (25.4)	2.18" (55.4)	0.125" (3.2)	2
MA4H12P	1/4"	3/4"	1.38" (35.1)	2.18" (55.4)	0.125" (3.2)	2
MA4H16P	1/4"	1"	1.38" (35.1)	2.68" (68.1)	0.125" (3.2)	2
MA6H2P	3/8"	1/8"	1.00" (25.4)	2.75" (69.9)	0.188" (4.8)	2
MA6H4P	3/8"	1/4"	1.00" (25.4)	2.75" (69.9)	0.218" (5.5)	2
MA6H6P	3/8"	3/8"	0.81" (20.6)	2.19" (55.6)	0.218" (5.5)	2
MA6H8P	3/8"	1/2"	1.00" (25.4)	3.00" (76.2)	0.125" (3.2)	1
MA6H12P	3/8"	3/4"	1.13" (28.7)	3.00" (76.2)	0.218" (5.5)	2
MA6H16P	3/8"	1"	1.13" (28.7)	3.00" (76.2)	0.218" (5.5)	2
MA9H2P	9/16"	1/8"	1.13" (28.7)	3.00" (76.2)	0.188" (4.8)	2
MA9H4P	9/16"	1/4"	1.13" (28.7)	2.81" (71.4)	0.250" (6.4)	2
MA9H6P	9/16"	3/8"	1.13" (28.7)	2.81" (71.4)	0.281" (7.1)	2
MA9H8P	9/16"	1/2"	1.18" (30.0)	3.00" (76.2)	0.281" (7.1)	2
MA9H12P	9/16"	3/4"	1.13" (28.7)	2.63" (66.8)	0.281" (7.1)	2
MA9H16P	9/16"	1"	1.38" (35.1)	3.00" (76.2)	0.281" (7.1)	2

NOTE: See page ACC-1 to determine maximum allowable working pressure (MAWP)



All dimensions are for reference only and are subject to change.
Dimensions in parentheses are millimeters (mm).

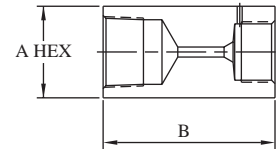
Page ACC-3



MALE-FEMALE ADAPTERS

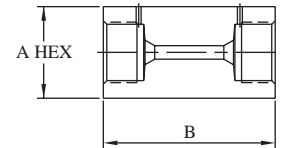
High Pressure Female x NPT Female

Catalog Number	Female H/P	Female NPT	A		B		Port	
10F4H2P	1/4"	1/8"	0.75"	(19.1)	1.50"	(38.1)	0.093"	(2.4)
10F4H4P	1/4"	1/4"	0.75"	(19.1)	1.50"	(38.1)	0.093"	(2.4)
10F4H6P	1/4"	3/8"	1.00"	(25.4)	1.62"	(41.1)	0.093"	(2.4)
10F4H8P	1/4"	1/2"	1.38"	(35.1)	2.12"	(53.8)	0.093"	(2.4)
10F6H2P	3/8"	1/8"	1.00"	(25.4)	1.75"	(44.5)	0.125"	(3.2)
10F6H4P	3/8"	1/4"	1.00"	(25.4)	1.75"	(44.5)	0.125"	(3.2)
10F6H6P	3/8"	3/8"	1.00"	(25.4)	1.75"	(44.5)	0.125"	(3.2)
10F6H8P	3/8"	1/2"	1.38"	(35.1)	2.12"	(53.8)	0.125"	(3.2)
10F9H2P	9/16"	1/8"	1.38"	(35.1)	2.25"	(57.2)	0.187"	(4.7)
10F9H4P	9/16"	1/4"	1.38"	(35.1)	2.25"	(57.2)	0.187"	(4.7)
10F9H6P	9/16"	3/8"	1.38"	(35.1)	2.25"	(57.2)	0.187"	(4.7)
10F9H8P	9/16"	1/2"	1.38"	(35.1)	2.25"	(57.2)	0.187"	(4.7)
10F9H12P	9/16"	3/4"	1.38"	(35.1)	2.50"	(63.5)	0.187"	(4.7)



High Pressure Female x High Pressure Female

Catalog Number	Female H/P	Female H/P	A		B		Port	
60F4H6H	1/4"	3/8"	1.00"	(25.4)	1.75"	(44.5)	0.093"	(2.4)
60F4H9H	1/4"	9/16"	1.38"	(35.1)	2.25"	(57.2)	0.093"	(2.4)
60F6H9H	3/8"	9/16"	1.38"	(35.1)	2.25"	(57.2)	0.125"	(3.2)



NOTE: See page ACC-1 to determine maximum allowable working pressure (MAWP)